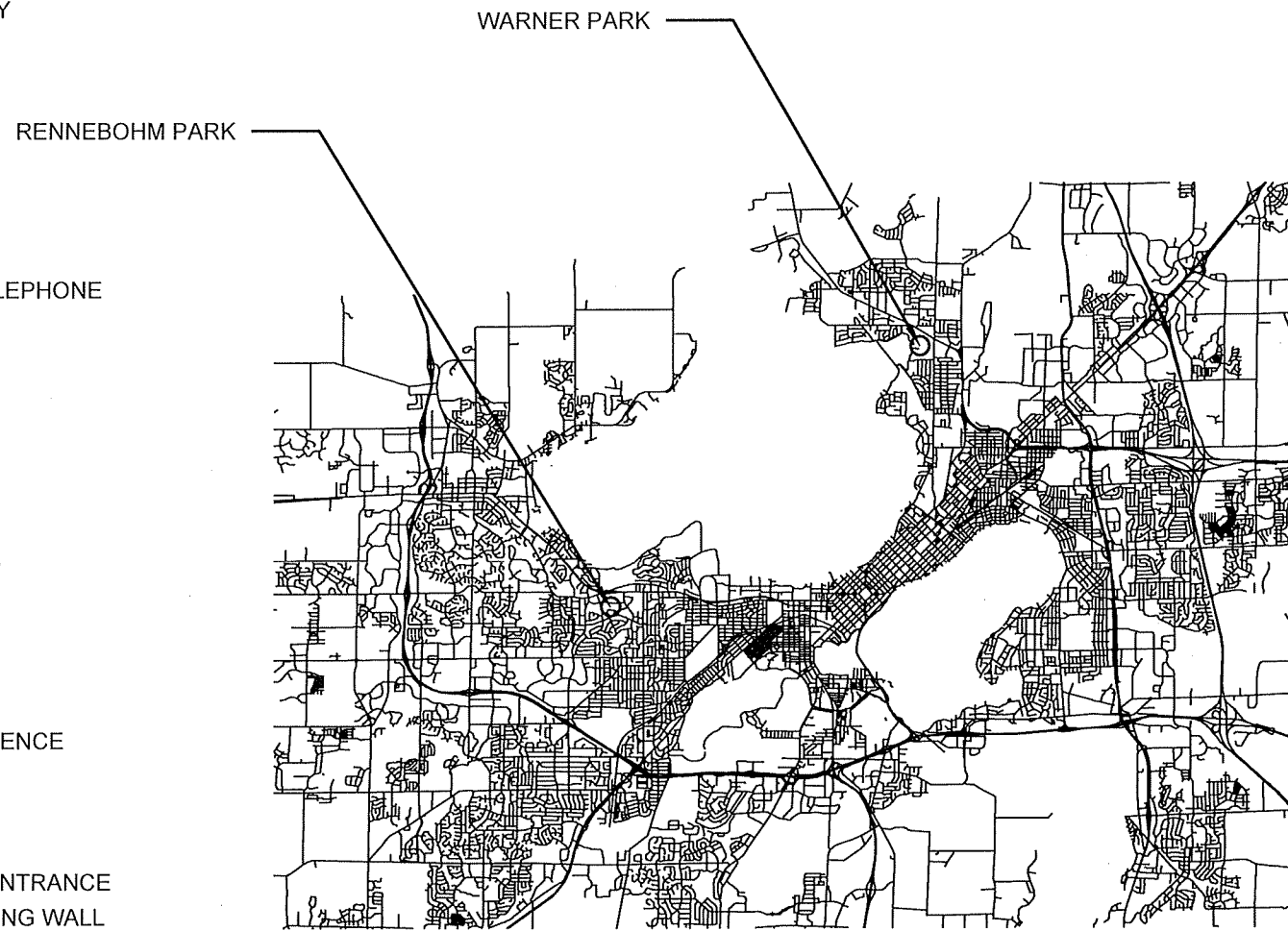


LEGEND

- EX. ELECTRICAL HAND HOLE
- ⊕ EX. ELECTRICAL PEDESTAL
- EX. TELEPHONE PEDESTAL
- ⊕ EX. TREE
- ⊕ EX. WATER HYDRANT
- EX. WATER VALVE
- EX. PROPERTY LINE
- EX. EASEMENT
- x- EX. FENCE LINE
- ~ EX. TREE LINE
- - - EX. CONTOUR (INDEX)
- - - EX. CONTOUR (INTER)
- EX. ABANDONED UTILITY
- E EX. ELECTRIC
- FO EX. FIBER OPTIC
- G EX. NATURAL GAS
- OH EX. OVERHEAD LINE
- SN EX. SANITARY SEWER
- ST EX. STORM SEWER
- TV EX. CABLE TV
- T EX. UNDERGROUND TELEPHONE
- W EX. WATER LINE
- [Pattern] EX. GRAVEL
- [Pattern] EX. CONCRETE
- PRO. H INLET
- ### ⊕ PRO. SPOT ELEVATION
- - - PRO. CONTOUR (INDEX)
- - - PRO. CONTOUR (INTER)
- x-x- PRO. FENCE
- - - PRO. GRADING LIMITS
- PRO. SILT SOCK
- PRO. CONSTRUCTION FENCE
- ST PRO. STORM SEWER
- [Pattern] PRO. ASPHALT
- [Pattern] PRO. CONCRETE
- [Pattern] PRO. CONSTRUCTION ENTRANCE
- [Pattern] PRO. BOULDER RETAINING WALL
- [Pattern] REMOVE EX. ASPHALT PAVEMENT
- [Pattern] REMOVE EX. TOPSOIL

2022 INCLUSIVE PLAYGROUNDS CONTRACT 9172 MUNIS NOS. 13934-51-130 & 13935-51-130



DESIGNED BY:



City of Madison
Department of Public Works
PARKS DIVISION
City-County Building, Suite 104
210 Martin Luther King, Jr. Blvd.
Madison, WI 53703

play
**MADISON
PARKS**



PROJECT:

SHEET SCHEDULE

- 1 RENNEBOHM PARK**
 - 1.1 PROJECT LOCATION AND SITE ACCESS
 - 1.2 EXISTING CONDITIONS
 - 1.3 DEMOLITION AND SITE PLAN
 - 1.4 EQUIPMENT LAYOUT PLAN
 - 1.5 SITE PLAN
 - 1.6 GRADING AND EROSION CONTROL PLAN
 - 1.7 DESIGN COMPUTATIONS
- 2 WARNER PARK**
 - 2.1 PROJECT LOCATION AND SITE ACCESS
 - 2.2 EXISTING CONDITIONS
 - 2.3 DEMOLITION AND SITE PLAN
 - 2.4 EQUIPMENT LAYOUT PLAN
 - 2.5 SITE PLAN
 - 2.6 GRADING AND EROSION CONTROL PLAN
 - 2.7 DESIGN COMPUTATIONS
- 3 DETAILS**
 - 3.1 POURED-IN-PLACE PLAYGROUND SURFACING
 - 3.2 ORNAMENTAL FENCE

Although every effort has been made in preparing these plans and checking them for accuracy, the contractor and subcontractors must check all details and dimensions of their trade and be responsible for the same.

ITEM	DATE
ADVERTISED TO BID: KK	2022-03-28

PUBLIC WORKS PROJECT #:
9172

SHEET TITLE:
COVER SHEET

SHEET NUMBER:



City of Madison
 Department of Public Works
PARKS DIVISION
 City-County Building, Suite 104
 210 Martin Luther King, Jr. Blvd.
 Madison, WI 53703

play
**MADISON
 PARKS**



PROJECT:

*2022 INCLUSIVE
 PLAYGROUNDS*

PROJECT ADDRESS:

*RENNEBOHM PARK
 115 N EAU CLAIRE AVE
 MADISON, WI 53705*

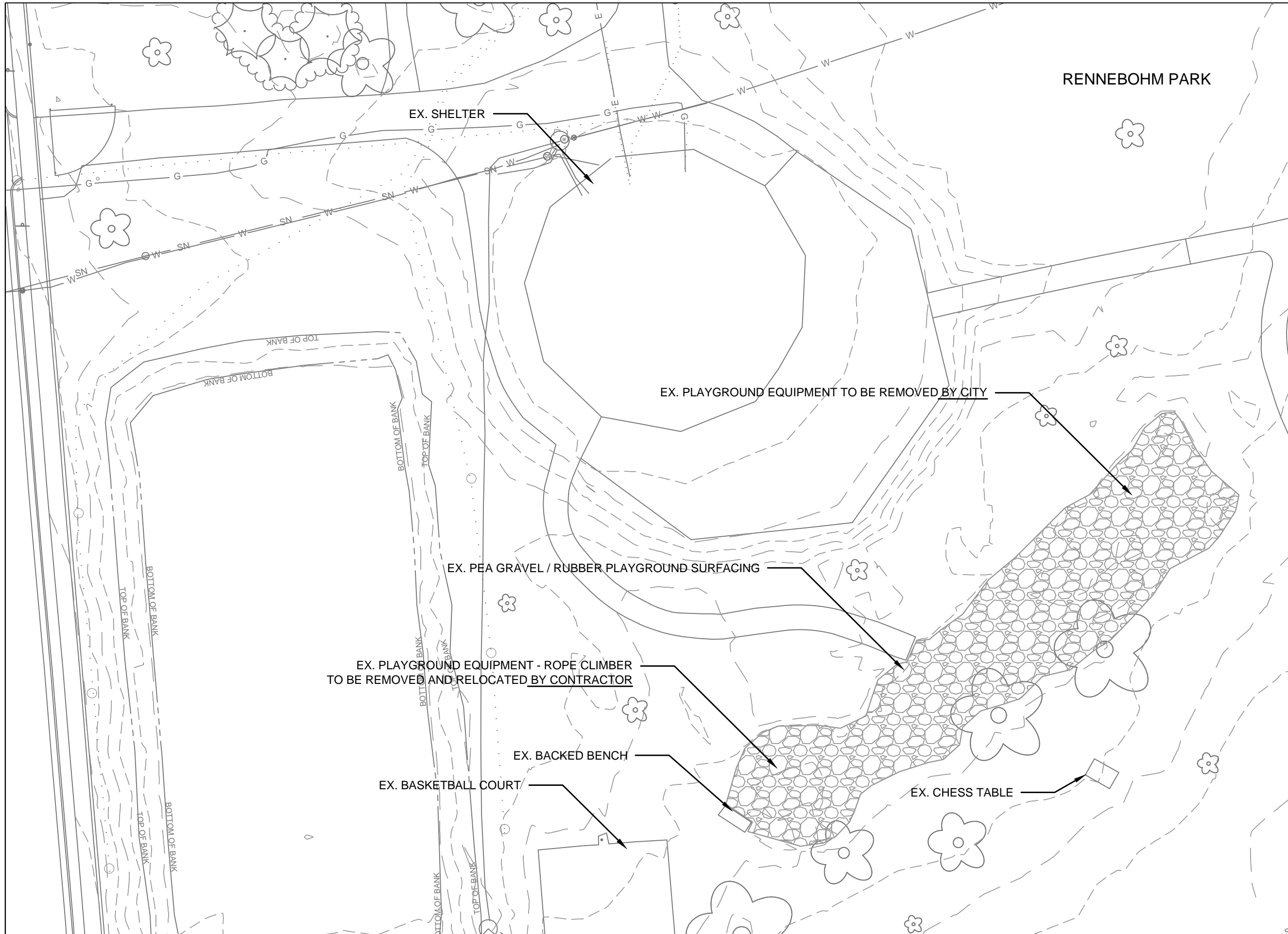
Although every effort has been made in preparing these plans and checking them for accuracy, the contractor and subcontractors must check all details and dimensions of their trade and be responsible for the same.

ITEM	DATE
ADVERTISED TO BID: KK	2022-03-28

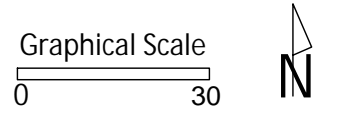
PUBLIC WORKS PROJECT #:
9172

SHEET TITLE:
***PROJECT LOCATION
 AND SITE ACCESS***

SHEET NUMBER:
1.1



City of Madison
 Department of Public Works
PARKS DIVISION
 City-County Building, Suite 104
 210 Martin Luther King, Jr. Blvd.
 Madison, WI 53703



PROJECT:
*2022 INCLUSIVE
 PLAYGROUNDS*

PROJECT ADDRESS:
*RENNEBOHM PARK
 115 N EAU CLAIRE AVE
 MADISON, WI 53705*

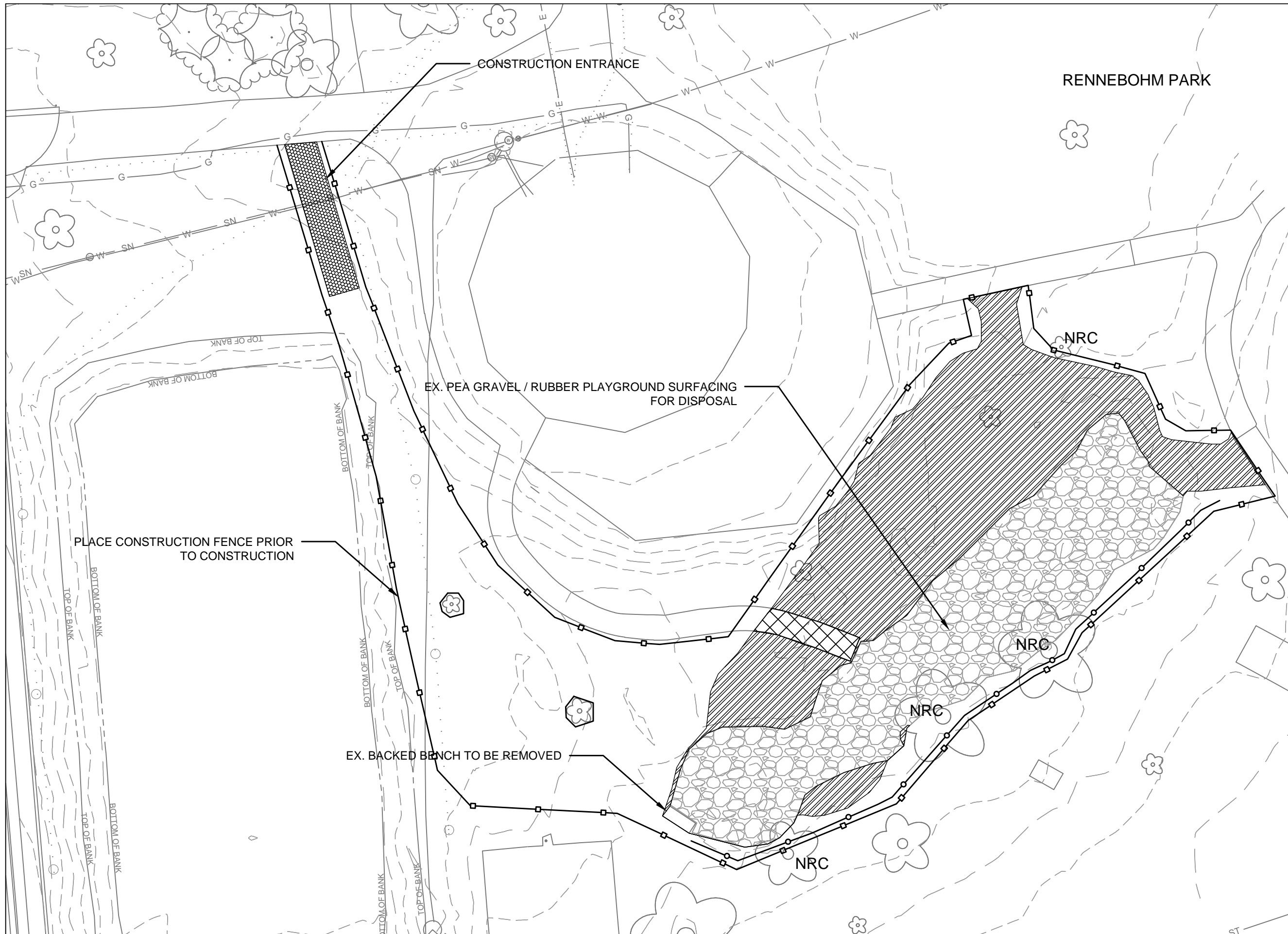
Although every effort has been made in preparing these plans and checking them for accuracy, the contractor and subcontractors must check all details and dimensions of their trade and be responsible for the same.

ITEM	DATE
ADVERTISED TO BID: KK	2022-03-28

PUBLIC WORKS PROJECT #:
9172

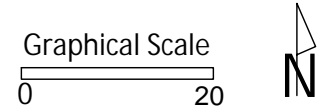
SHEET TITLE:
EXISTING CONDITIONS

SHEET NUMBER:
1.2



City of Madison
 Department of Public Works
PARKS DIVISION
 City-County Building, Suite 104
 210 Martin Luther King, Jr. Blvd.
 Madison, WI 53703

play
MADISON
PARKS



PROJECT:
**2022 INCLUSIVE
 PLAYGROUNDS**

PROJECT ADDRESS:
**RENNEBOHM PARK
 115 N EAU CLAIRE AVE
 MADISON, WI 53705**

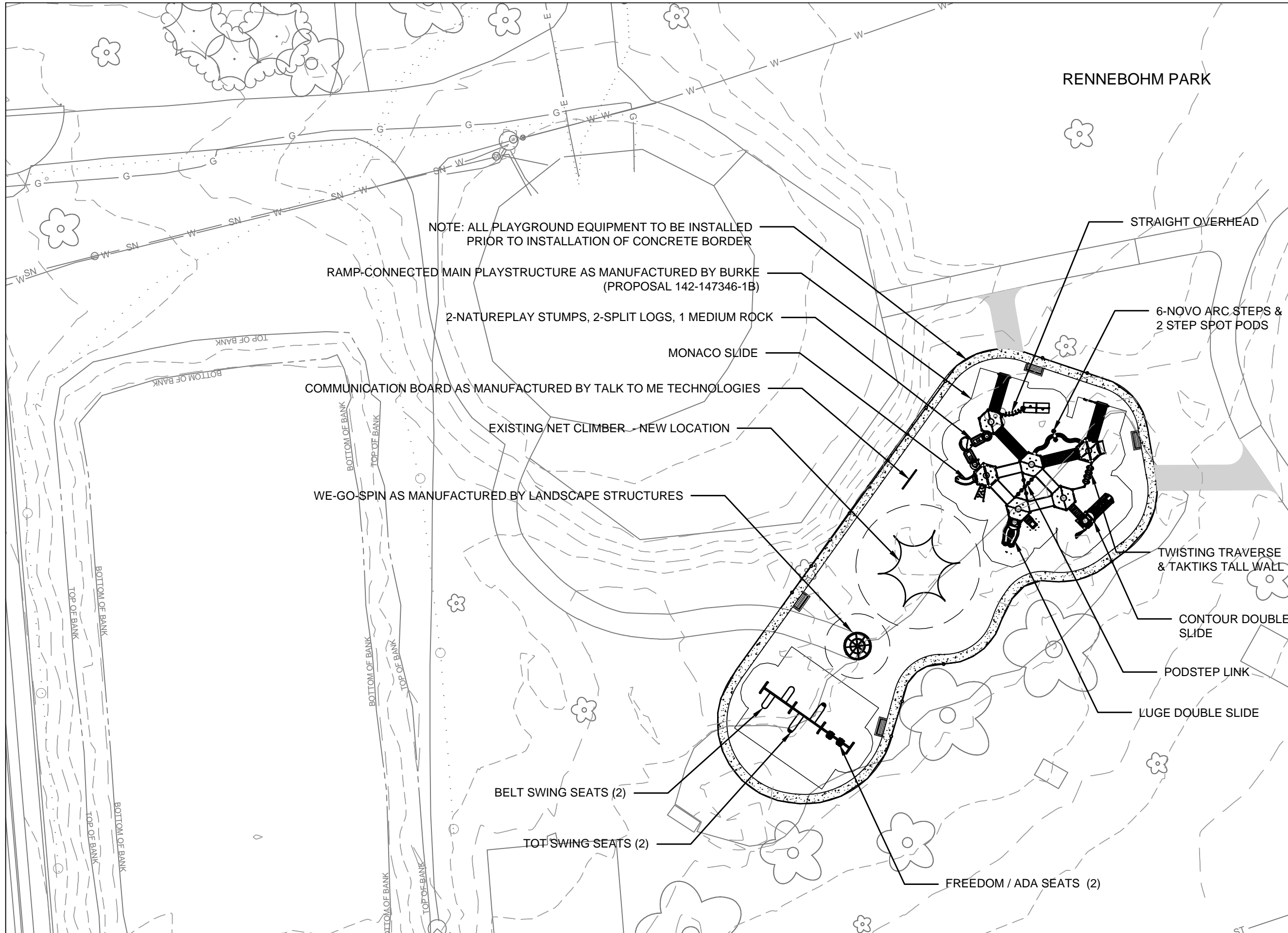
Although every effort has been made in preparing these plans and checking them for accuracy, the contractor and subcontractors must check all details and dimensions of their trade and be responsible for the same.

ITEM	DATE
ADVERTISED TO BID: KK	2022-03-28

PUBLIC WORKS PROJECT #:
9172

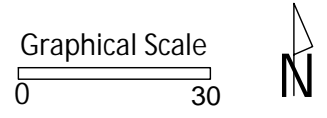
SHEET TITLE:
**DEMOLITION AND
 PROTECTION PLAN**

SHEET NUMBER:
1.3



City of Madison
 Department of Public Works
PARKS DIVISION
 City-County Building, Suite 104
 210 Martin Luther King, Jr. Blvd.
 Madison, WI 53703

play
**MADISON
 PARKS**



PROJECT:
**2022 INCLUSIVE
 PLAYGROUNDS**

PROJECT ADDRESS:
**RENNEBOHM PARK
 115 N EAU CLAIRE AVE
 MADISON, WI 53705**

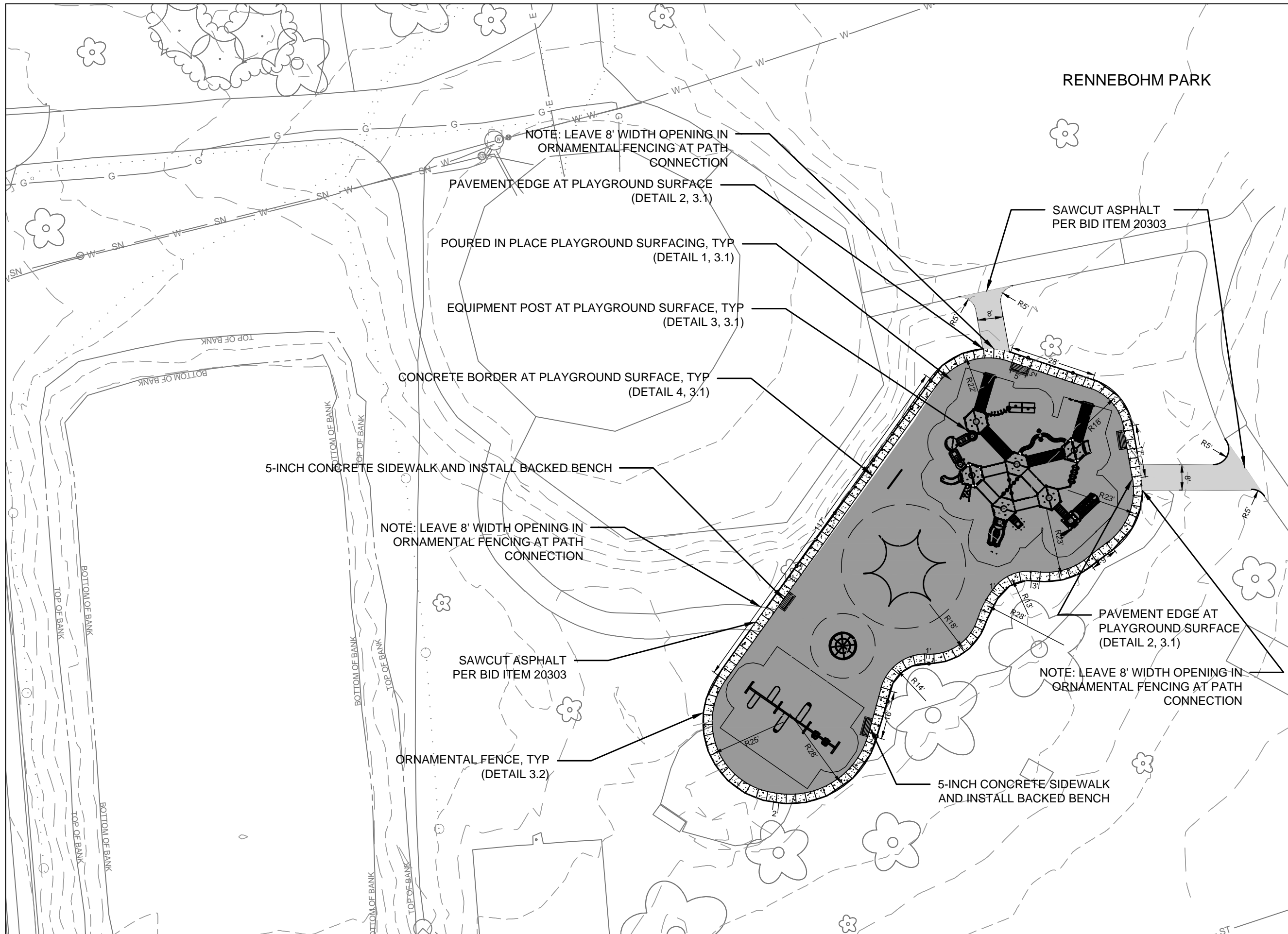
Although every effort has been made in preparing these plans and checking them for accuracy, the contractor and subcontractors must check all details and dimensions of their trade and be responsible for the same.

ITEM	DATE
ADVERTISED TO BID: KK	2022-03-28

PUBLIC WORKS PROJECT #:
9172

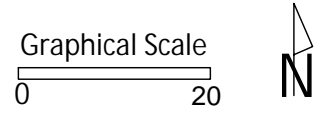
SHEET TITLE:
**EQUIPMENT LAYOUT
 PLAN**

SHEET NUMBER:
1.4



City of Madison
 Department of Public Works
PARKS DIVISION
 City-County Building, Suite 104
 210 Martin Luther King, Jr. Blvd.
 Madison, WI 53703

play
MADISON
PARKS



PROJECT:
**2022 INCLUSIVE
 PLAYGROUNDS**

PROJECT ADDRESS:
**RENNEBOHM PARK
 115 N EAU CLAIRE AVE
 MADISON, WI 53705**

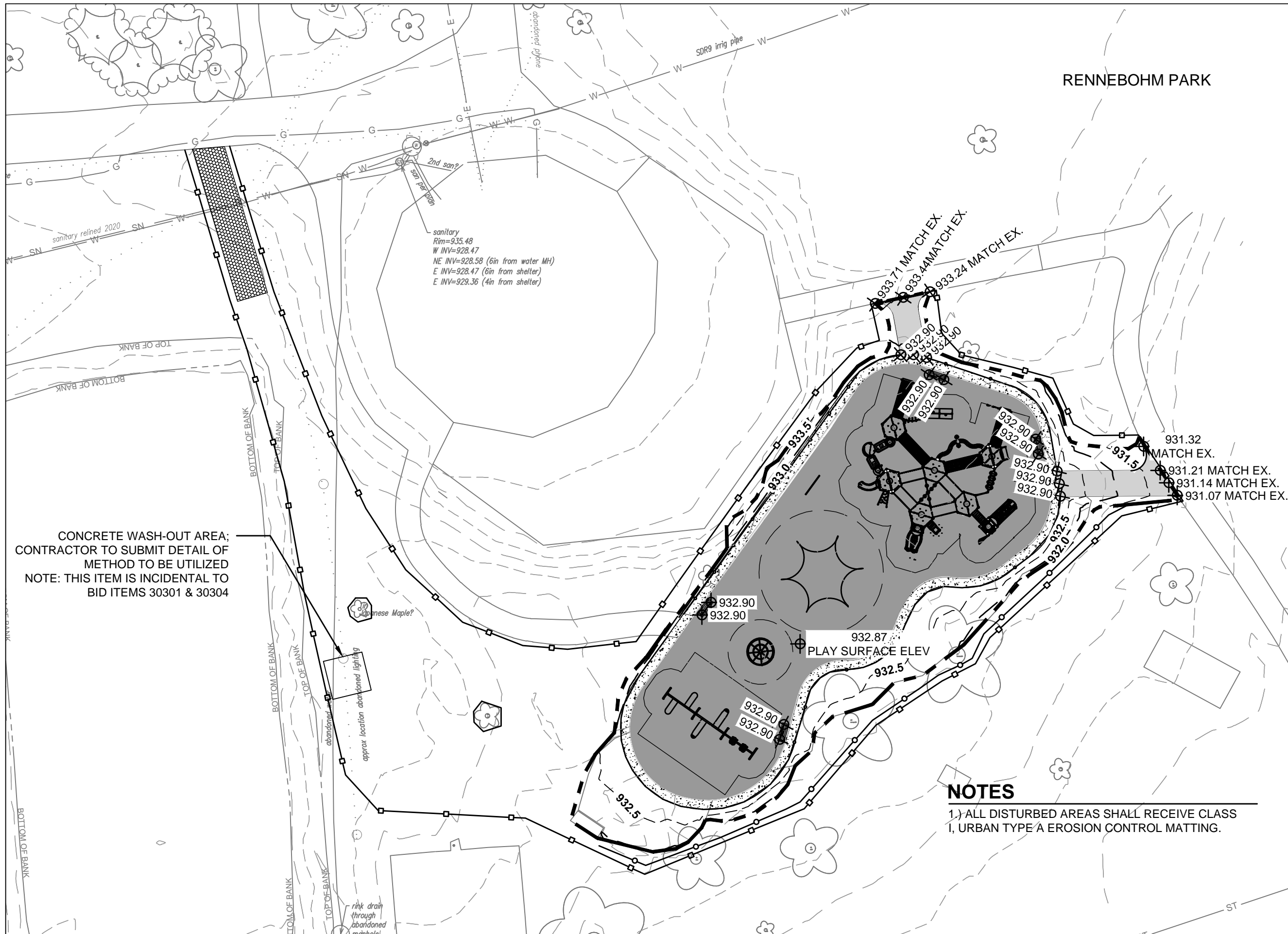
Although every effort has been made in preparing these plans and checking them for accuracy, the contractor and subcontractors must check all details and dimensions of their trade and be responsible for the same.

ITEM	DATE
ADVERTISED TO BID: KK	2022-03-28

PUBLIC WORKS PROJECT #:
9172

SHEET TITLE:
SITE PLAN

SHEET NUMBER:
1.5

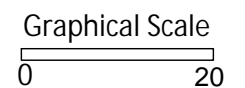


CONCRETE WASH-OUT AREA;
 CONTRACTOR TO SUBMIT DETAIL OF
 METHOD TO BE UTILIZED
 NOTE: THIS ITEM IS INCIDENTAL TO
 BID ITEMS 30301 & 30304

NOTES

- 1.) ALL DISTURBED AREAS SHALL RECEIVE CLASS I, URBAN TYPE A EROSION CONTROL MATTING.

City of Madison
 Department of Public Works
PARKS DIVISION
 City-County Building, Suite 104
 210 Martin Luther King, Jr. Blvd.
 Madison, WI 53703



PROJECT:
**2022 INCLUSIVE
 PLAYGROUNDS**

PROJECT ADDRESS:
**RENNEBOHM PARK
 115 N EAU CLAIRE AVE
 MADISON, WI 53705**

Although every effort has been made in preparing these plans and checking them for accuracy, the contractor and subcontractors must check all details and dimensions of their trade and be responsible for the same.

ITEM	DATE
ADVERTISED TO BID: KK	2022-03-28

PUBLIC WORKS PROJECT #:
9172

SHEET TITLE:
**GRADING AND
 EROSION CONTROL
 PLAN**

SHEET NUMBER:
1.6

Rennebohm Park Inclusive Playground - Earthwork Quantities										
City of Madison, WI Public Works Contract #9138										
Date Revised: 2/1/2022										
Note: Positive volumes are cuts, negative volumes are fills. Not all parts of all surface models (Digital Terrain Models) are used for computations or intended for actual construction.										
Existing	Renbm_Surv2021-08-27_Comb									
Proposed	2022 Rennebohm Inclusive PG_Volume.dwg									
Grp	Material	Item	From Surface Model	To Surface Model	area (sq ft)	depth (ft)	Unfactored volume (cu ft)	Unfactored volume (cu yd)	Expansion Factor (%)	Factored (Uncompacted) Volume (cu yd)
Asphalt to Concrete	Asphalt Excavate	Remove estimated 3in asphalt	n/a	n/a	26	0.25	7	0.2	0%	0.2
Asphalt to Concrete	Gravel (Clean) Excavate	Remove estimated 4in clean gravel base	n/a	n/a	26	0.33	9	0.3	0%	0.3
Asphalt to Concrete	Subsoil Excavate	Cut subsoil to proposed subgrade	Ex-9in	Pro-11in	26	varies	9	0.3	0%	0.3
Asphalt to Concrete	Subsoil Place	Fill subsoil to proposed subgrade	Ex-9in	Pro-11in	26	varies	0	0.0	0%	0.0
Asphalt to Concrete	Gravel (for Pavement) Place	Place 6in gravel base out to 6in from pavement edge	n/a	n/a	26	-0.50	-13	-0.5	0%	-0.5
Asphalt to Concrete	Concrete Place	Place 5in concrete	n/a	n/a	26	-0.42	-11	-0.4	0%	-0.4
Asphalt to Playsurface	Asphalt Excavate	Remove estimated 3in asphalt	n/a	n/a	164	0.25	41	1.5	0%	1.5
Asphalt to Playsurface	Gravel (Clean) Excavate	Remove estimated 4in clean gravel base	n/a	n/a	164	0.33	55	2.0	0%	2.0
Asphalt to Playsurface	Gravel (Dirty) Excavate	Remove estimated 2in mixed gravel/subsoil	n/a	n/a	164	0.17	27	1.0	0%	1.0
Asphalt to Playsurface	Subsoil Excavate	Cut subsoil to proposed subgrade	Ex-9in	Pro-8in	164	varies	5	0.2	0%	0.2
Asphalt to Playsurface	Subsoil Place	Fill subsoil to proposed subgrade	Ex-9in	Pro-8in	164	varies	-12	-0.5	0%	-0.5
Asphalt to Playsurface	Gravel (for Playsurface) Place	Place 4in gravel base	n/a	n/a	164	-0.33	-54	-2.0	0%	-2.0
Asphalt to Playsurface	Playsurface Place	Place 4in PIP playsurface	n/a	n/a	164	-0.33	-55	-2.0	0%	-2.0
Grass to Asphalt	Topsoil Excavate	Strip 6in topsoil	n/a	n/a	463	0.50	231	8.6	0%	8.6
Grass to Asphalt	Subsoil Excavate	Cut subsoil to proposed subgrade	Ex-6in	Pro-12in	463	varies	116	4.3	0%	4.3
Grass to Asphalt	Subsoil Place	Fill subsoil to proposed subgrade	Ex-6in	Pro-12in	463	varies	-39	-1.5	0%	-1.5
Grass to Asphalt	Gravel (Path) Place	Place 9in gravel base, out to 6in from asphalt edge	n/a	n/a	463	-0.75	-347	-12.9	0%	-12.9
Grass to Asphalt	Asphalt Place	Place 3in asphalt	n/a	n/a	402	-0.25	-100	-3.7	0%	-3.7
Grass to Asphalt	Topsoil Place	Place 3in topsoil on 6in wide gravel edge	n/a	n/a	61	-0.25	-15	-0.6	0%	-0.6
Grass to Concrete	Topsoil Excavate	Strip 6in topsoil	n/a	n/a	708	0.50	353.90	13.1	0%	13.1
Grass to Concrete	Subsoil Excavate	Cut subsoil to proposed subgrade	Ex-6in	Pro-11in	708	varies	208.27	7.7	0%	7.7
Grass to Concrete	Subsoil Place	Fill subsoil to proposed subgrade	Ex-6in	Pro-11in	708	varies	-74.28	-2.8	0%	-2.8
Grass to Concrete	Gravel (for concrete edge) Place	Place 6in gravel base out to 6in from pavement edge	n/a	n/a	708	-0.50	-353.90	-13.1	0%	-13.1
Grass to Concrete	Concrete Place	Place 5in concrete	n/a	n/a	708	-0.42	-294.94	-10.9	0%	-10.9
Grass to Grass	Topsoil Excavate	Strip 6in topsoil	n/a	n/a	1130	0.50	564.89	20.9	0%	20.9
Grass to Grass	Subsoil Excavate	Cut subsoil to proposed subgrade	Ex-6in	Pro-8in	1130	varies	39.33	1.5	0%	1.5
Grass to Grass	Subsoil Place	Fill subsoil to proposed subgrade	Ex-6in	Pro-8in	1130	varies	-248.84	-9.2	0%	-9.2
Grass to Grass	Topsoil Place	Place 6in topsoil	n/a	n/a	1130	-0.50	-564.89	-20.9	0%	-20.9

Grass to Play Surface	Topsoil Excavate	Strip 6in topsoil	n/a	n/a	4617	0.50	2408	89.2	0%	89.2
Grass to Play Surface	Subsoil Excavate	Cut subsoil to proposed subgrade	Ex-6in	Pro-8in	4617	varies	335	12.4	0%	12.4
Grass to Play Surface	Subsoil Place	Fill subsoil to proposed subgrade	Ex-6in	Pro-8in	4617	varies	-1243	-46.0	0%	-46.0
Grass to Play Surface	Place 4in gravel	Place 4in gravel	n/a	n/a	4617	-0.33	-1589	-58.9	0%	-58.9
Grass to Play Surface	Play Surface Place	Place 4in PIP playsurface	n/a	n/a	4617	-0.33	-1589	-58.9	0%	-58.9
Play Surface to Asphalt	Play Surface Excavate	Remove existing play surface, estimated depth 17in	n/a	n/a	33	1.42	47.29	1.8	0%	1.8
Play Surface to Asphalt	Subsoil Excavate	Cut subsoil to proposed subgrade	Ex-6in	Pro-12in	33	varies	0	0.0	0%	0.0
Play Surface to Asphalt	Subsoil Place	Fill subsoil to proposed subgrade	Ex-6in	Pro-12in	33	varies	-52	-1.9	0%	-1.9
Play Surface to Asphalt	Gravel (Path) Place	Place 9in gravel base, out to 6in from asphalt edge	n/a	n/a	33	-0.75	-25	-0.9	0%	-0.9
Play Surface to Asphalt	Asphalt Place	Place 3in asphalt	n/a	n/a	33	-0.25	-8	-0.3	0%	-0.3
Play Surface to Asphalt	Topsoil Place	Place 3in topsoil on 6in wide gravel edge	n/a	n/a	33	-0.25	-8	-0.3	0%	-0.3
Play Surface to Concrete	Play Surface Excavate	Remove existing play surface, estimated depth 17in	n/a	n/a	602	1.42	854.53	31.6	0%	31.6
Play Surface to Concrete	Subsoil Place	Cut subsoil to proposed subgrade	Ex-17in	Pro-11in	602	varies	0.00	0.0	0%	0.0
Play Surface to Concrete	Subsoil Excavate	Fill subsoil to proposed subgrade	Ex-17in	Pro-11in	602	varies	-651.30	-24.1	0%	-24.1
Play Surface to Concrete	Concrete Border Place (placeholder volume)	Place playground border timbers (placeholder volume to balance volume comp)	n/a	n/a	602	-1.00	-601.78	-22.3	0%	-22.3
Play Surface to Grass	Play Surface Excavate	Remove existing play surface, estimated depth 17in	n/a	n/a	2088	1.42	2957.31	109.5	0%	109.5
Play Surface to Grass	Subsoil Excavate	Cut subsoil to proposed subgrade	Ex-17in	Pro-6in	2088	varies	0.00	0.0	0%	0.0
Play Surface to Grass	Subsoil Place	Fill subsoil to proposed subgrade	Ex-17in	Pro-6in	2088	varies	-2727.22	-101.0	0%	-101.0
Play Surface to Grass	Topsoil Place	Place 6in topsoil	n/a	n/a	2088	-0.50	-1043.78	-38.7	0%	-38.7
Play Surface to Play Surface	Play Surface Excavate	Remove existing play surface, estimated depth 17in	n/a	n/a	3691	1.42	5241.33	194.1	0%	194.1
Play Surface to Play Surface	Subsoil Excavate	Cut subsoil to proposed subgrade	Ex-17in	Pro-8in	3691	varies	0.00	0.0	0%	0.0
Play Surface to Play Surface	Subsoil Place	Fill subsoil to proposed subgrade	Ex-17in	Pro-8in	3691	varies	-5620.16	-215.6	0%	-215.6
Gravel (for Play Surface) Place	Place 4in gravel	Place 4in gravel	n/a	n/a	3691	-0.33	-1218	-45.1	0%	-45.1
Play Surface to Play Surface	Play Surface Place	Place 4in PIP play surface	n/a	n/a	3691	-0.33	-1218.06	-45.1	0%	-45.1

Rennebohm Park Playground - Earthwork Quantities	
City of Madison, WI Public Works Contract #9138	
Date Revised: 2/1/2022	
Derived from more detailed spreadsheet available from Parks Div	
Computation Summary	
Positive volumes are cuts (material available);	
negative volumes are fills (material needed)	
Row Labels	Sum of Unfactored volume (cu yd)
Asphalt Place	-4.0
Gravel (for Pavement) Place	-0.5
Play Surface Excavate	337.1
Play Surface Place	-104.0
Subsoil Excavate	2.2
Subsoil Place	-378.4
Topsoil Excavate	131.8
Topsoil Place	-60.5
Concrete Place	-11.3
Gravel (for Playsurface) Place	-2.0
Gravel (Path) Place	-13.8
Gravel (for concrete edge) Place	-13.1
Grand Total	-116.5

Bid Item	Quantity	Units	Relation to Table Above
20101 Excavation Cut	134	CY	= Subsoil Excavate + Topsoil Excavate
20103 Excavation Cut - Pea Gravel / Rubber Mix	89	CY	= Play Surface Excavate
20202 Fill Borrow	67	CY	= Subsoil Excavate + Subsoil Place
20221 Topsoil	362	SY	=(Topsoil Place)/-167
40102 Crushed Aggregate Base Course Gradation No. 2 & 3	59	tons	=(Gravel for Pavement Place + Gravel for Playsurface Place + Gravel for Concrete Edge Place) * -2 ton/cubic
40201 3" Depth HMA Pavement 4 LT58-28S	9.0	tons	= Asphalt Place * -2.16 ton/cubic yard
90002 Playground Surfacing - Poured-In-Place Rubber	114	CY	= Play Surface Place * -1.10

City of Madison
Department of Public Works
PARKS DIVISION
City-County Building, Suite 104
210 Martin Luther King, Jr. Blvd.
Madison, WI 53703



PROJECT:
2022 INCLUSIVE PLAYGROUNDS

PROJECT ADDRESS:
**RENNEBOHM PARK
115 N EAU CLAIRE AVE
MADISON, WI 53705**

Although every effort has been made in preparing these plans and checking them for accuracy, the contractor and subcontractors must check all details and dimensions of their trade and be responsible for the same.

ITEM DATE
ADVERTISED TO BID: KK 2022-03-28

PUBLIC WORKS PROJECT #:
9172

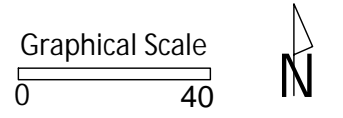
SHEET TITLE:
VOLUME COMPUTATIONS

SHEET NUMBER:
1.7



City of Madison
 Department of Public Works
PARKS DIVISION
 City-County Building, Suite 104
 210 Martin Luther King, Jr. Blvd.
 Madison, WI 53703

play
**MADISON
 PARKS**



PROJECT:

**2022 INCLUSIVE
 PLAYGROUNDS**

PROJECT ADDRESS:

**WARNER PARK
 2930 N SHERMAN AVE
 MADISON, WI 53704**

Although every effort has been made in preparing these plans and checking them for accuracy, the contractor and subcontractors must check all details and dimensions of their trade and be responsible for the same.

ITEM	DATE
ADVERTISED TO BID: KK	2022-03-28

PUBLIC WORKS PROJECT #:

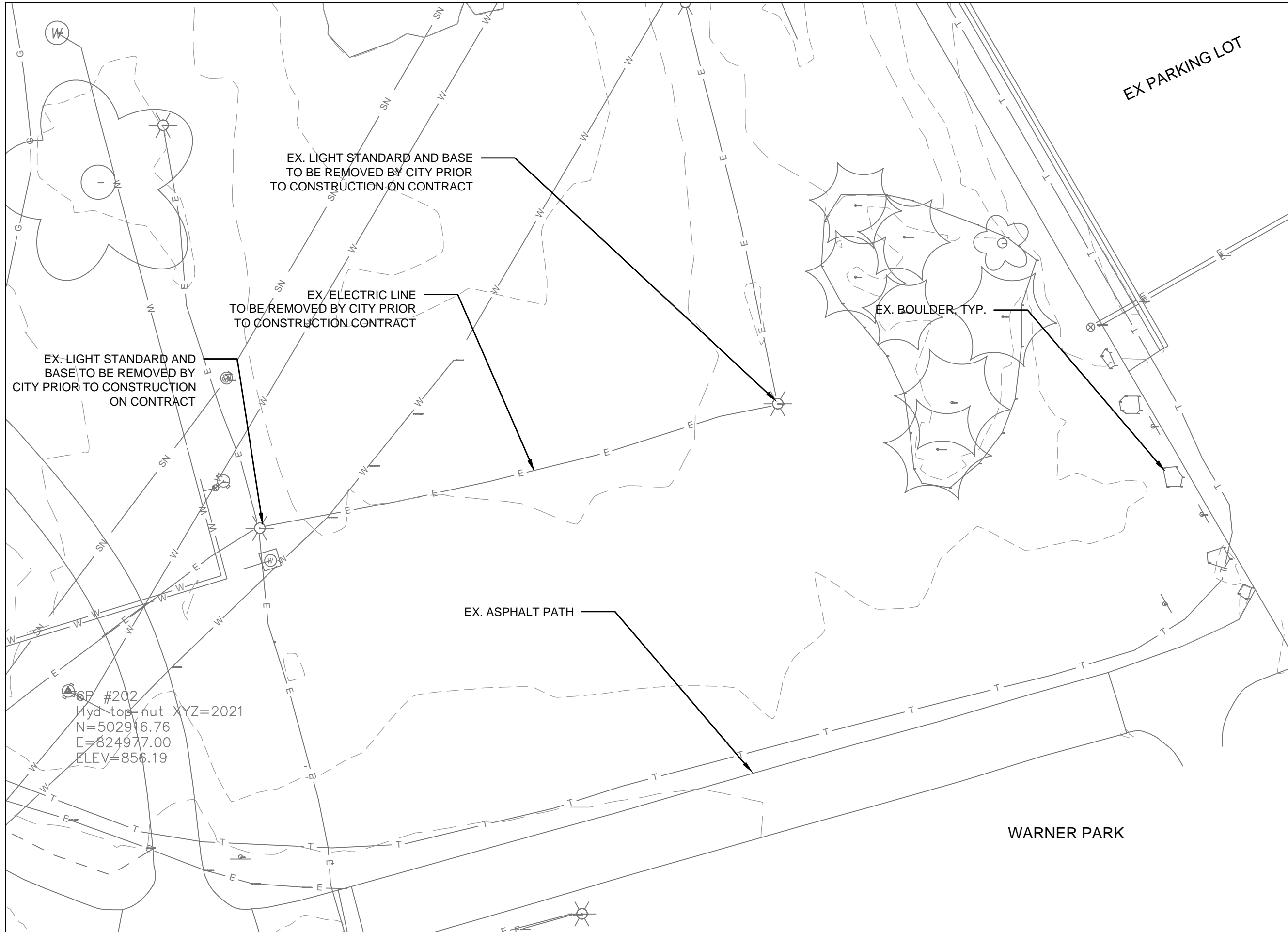
9172

SHEET TITLE:

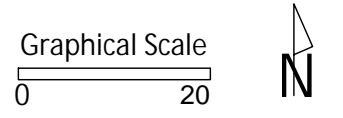
**PROJECT LOCATION
 AND SITE ACCESS**

SHEET NUMBER:

2.1



City of Madison
 Department of Public Works
PARKS DIVISION
 City-County Building, Suite 104
 210 Martin Luther King, Jr. Blvd.
 Madison, WI 53703



PROJECT:
*2022 INCLUSIVE
 PLAYGROUNDS*

PROJECT ADDRESS:
*WARNER PARK
 2930 N SHERMAN AVE
 MADISON, WI 53704*

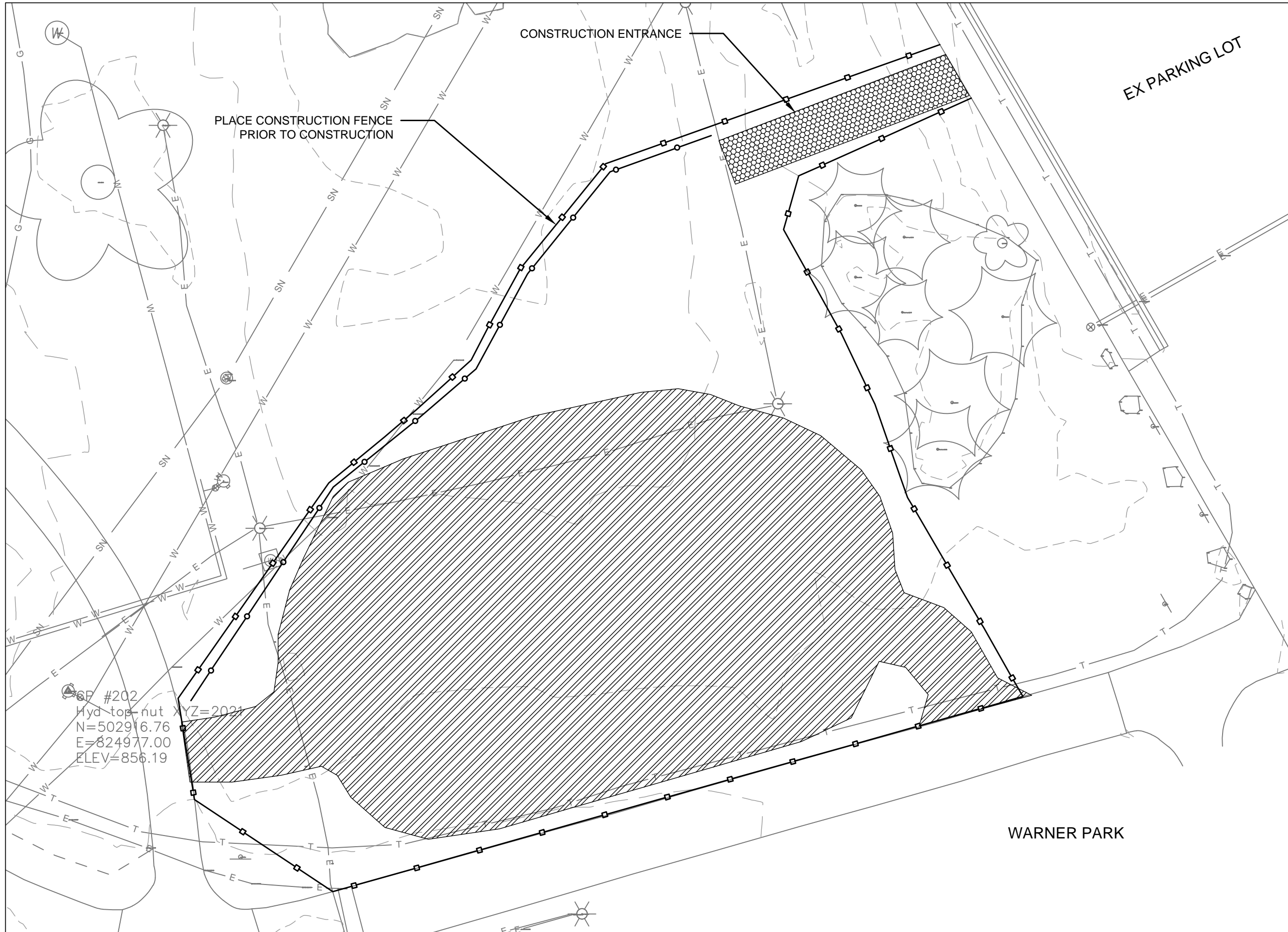
Although every effort has been made in preparing these plans and checking them for accuracy, the contractor and subcontractors must check all details and dimensions of their trade and be responsible for the same.

ITEM	DATE
ADVERTISED TO BID: KK	2022-03-28

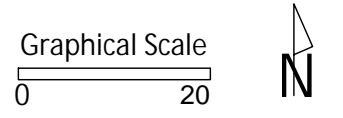
PUBLIC WORKS PROJECT #:
9172

SHEET TITLE:
EXISTING CONDITIONS

SHEET NUMBER:
2.2



City of Madison
 Department of Public Works
PARKS DIVISION
 City-County Building, Suite 104
 210 Martin Luther King, Jr. Blvd.
 Madison, WI 53703



PROJECT:

**2022 INCLUSIVE
PLAYGROUNDS**

PROJECT ADDRESS:

**WARNER PARK
2930 N SHERMAN AVE
MADISON, WI 53704**

Although every effort has been made in preparing these plans and checking them for accuracy, the contractor and subcontractors must check all details and dimensions of their trade and be responsible for the same.

ITEM	DATE
ADVERTISED TO BID: KK	2022-03-28

PUBLIC WORKS PROJECT #:

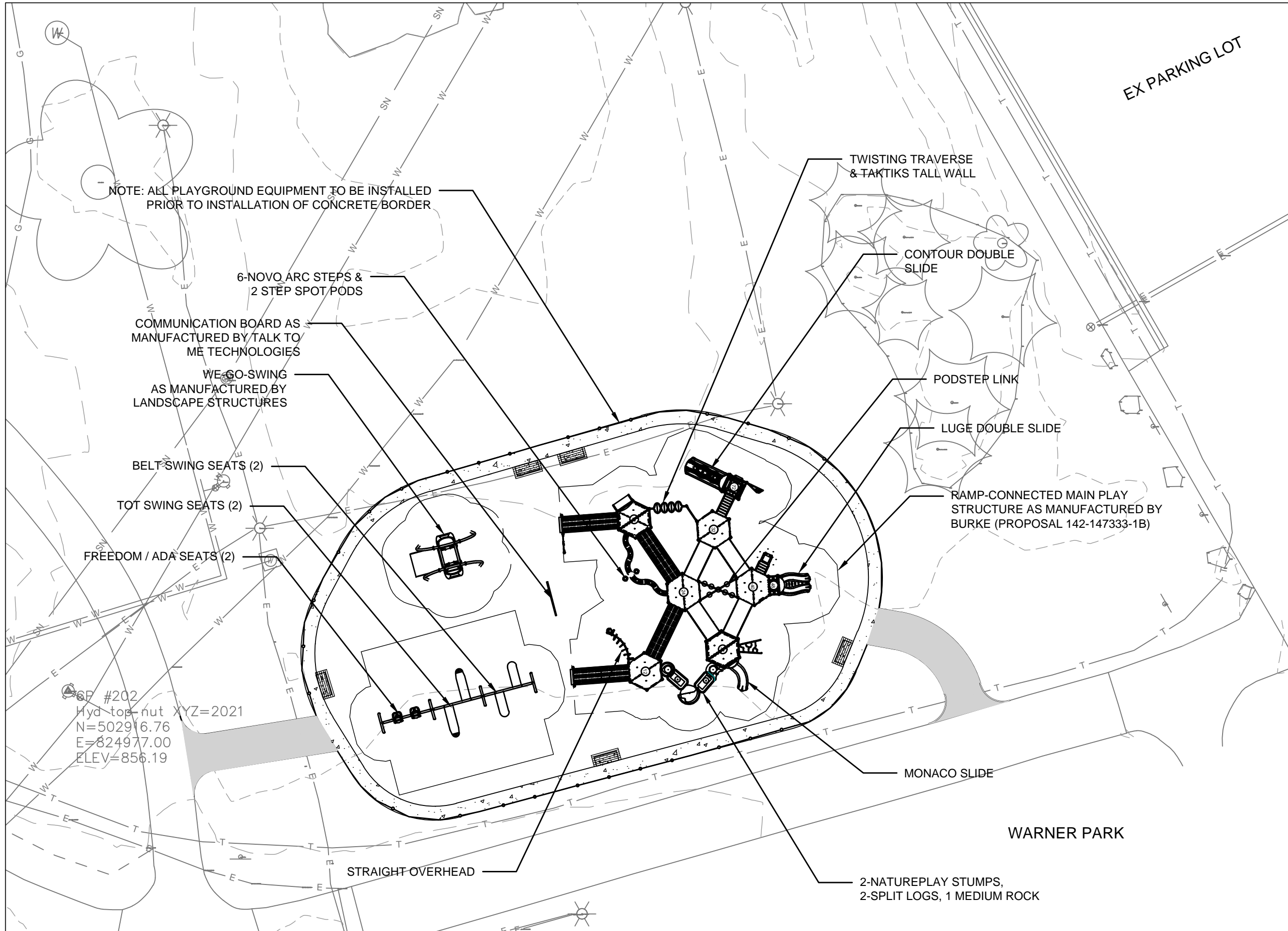
9172

SHEET TITLE:

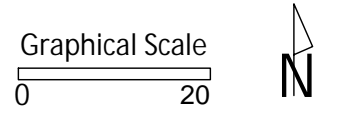
**DEMOLITION AND
SITE PLAN**

SHEET NUMBER:

2.3



City of Madison
 Department of Public Works
PARKS DIVISION
 City-County Building, Suite 104
 210 Martin Luther King, Jr. Blvd.
 Madison, WI 53703



PROJECT:
**2022 INCLUSIVE
 PLAYGROUNDS**

PROJECT ADDRESS:
**WARNER PARK
 2930 N SHERMAN AVE
 MADISON, WI 53704**

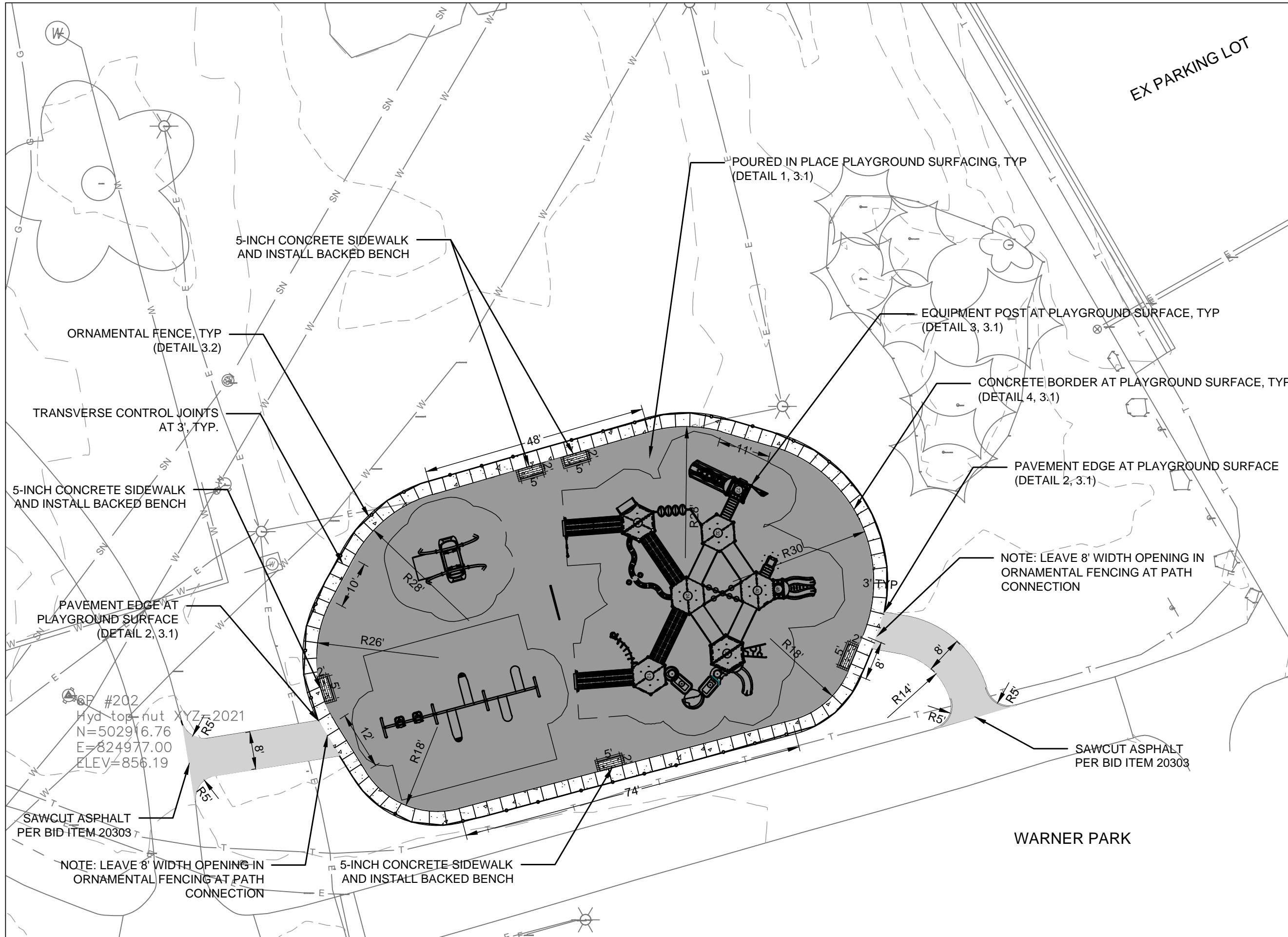
Although every effort has been made in preparing these plans and checking them for accuracy, the contractor and subcontractors must check all details and dimensions of their trade and be responsible for the same.

ITEM	DATE
ADVERTISED TO BID: KK	2022-03-28

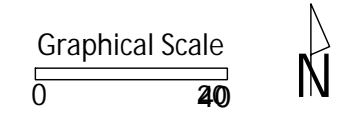
PUBLIC WORKS PROJECT #:
9172

SHEET TITLE:
**EQUIPMENT
 LAYOUT PLAN**

SHEET NUMBER:
2.4



City of Madison
 Department of Public Works
PARKS DIVISION
 City-County Building, Suite 104
 210 Martin Luther King, Jr. Blvd.
 Madison, WI 53703



PROJECT:
2022 INCLUSIVE PLAYGROUNDS

PROJECT ADDRESS:
**WARNER PARK
 2930 N SHERMAN AVE
 MADISON, WI 53704**

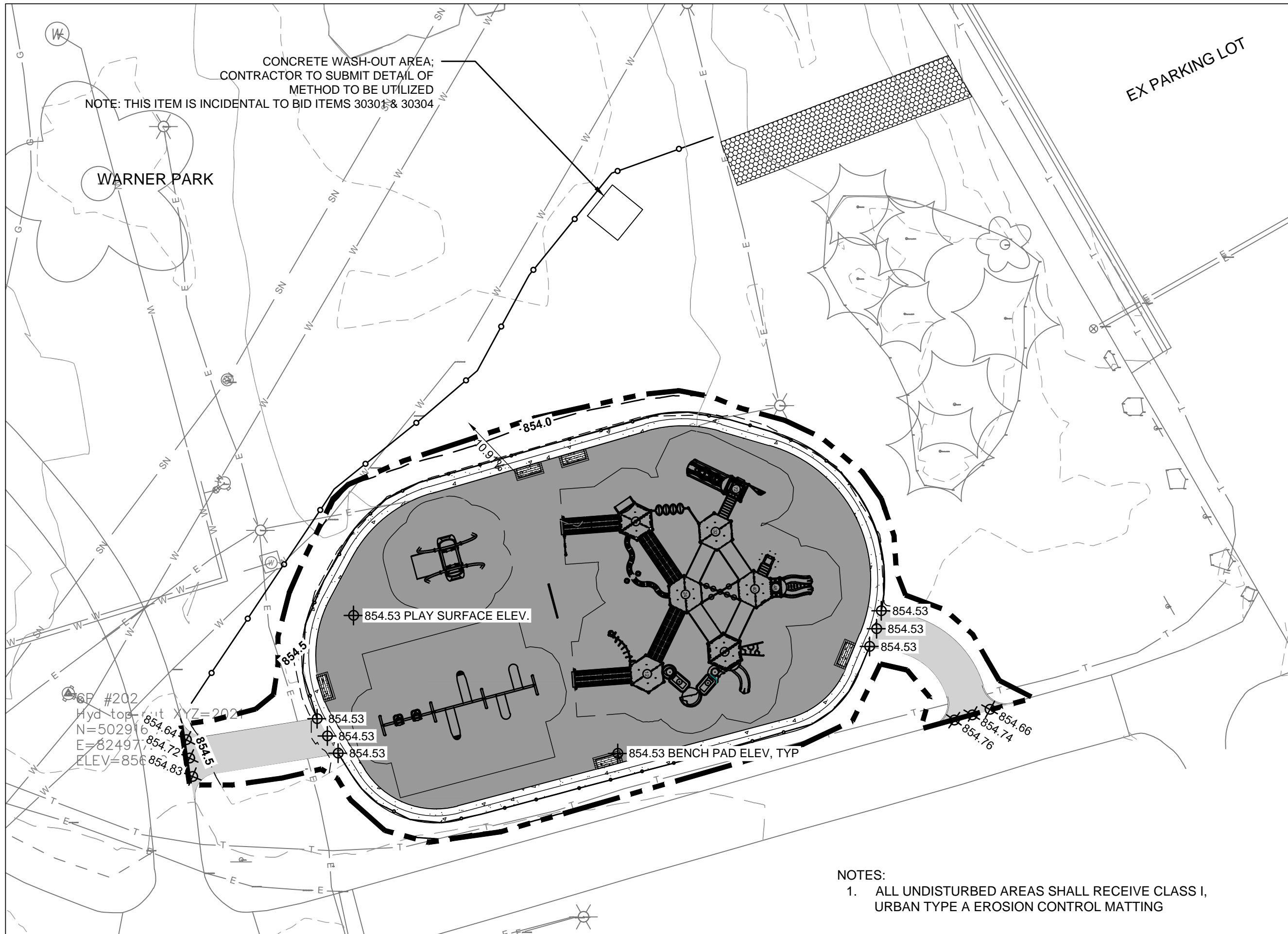
Although every effort has been made in preparing these plans and checking them for accuracy, the contractor and subcontractors must check all details and dimensions of their trade and be responsible for the same.

ITEM	DATE
ADVERTISED TO BID: KK	2022-03-28

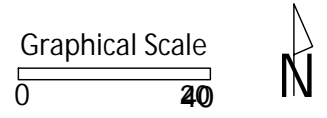
PUBLIC WORKS PROJECT #:
9172

SHEET TITLE:
SITE PLAN

SHEET NUMBER:
2.5



City of Madison
 Department of Public Works
PARKS DIVISION
 City-County Building, Suite 104
 210 Martin Luther King, Jr. Blvd.
 Madison, WI 53703



PROJECT:
**2022 INCLUSIVE
 PLAYGROUNDS**

PROJECT ADDRESS:
**WARNER PARK
 2930 N SHERMAN AVE
 MADISON, WI 53704**

Although every effort has been made in preparing these plans and checking them for accuracy, the contractor and subcontractors must check all details and dimensions of their trade and be responsible for the same.

ITEM	DATE
ADVERTISED TO BID: KK	2022-03-28

PUBLIC WORKS PROJECT #:
9172

SHEET TITLE:
**GRADING AND
 EROSION CONTROL
 PLAN**

SHEET NUMBER:
2.6

- NOTES:
- ALL UNDISTURBED AREAS SHALL RECEIVE CLASS I, URBAN TYPE A EROSION CONTROL MATTING

Warner Park Inclusive Playground - Earthwork Quantities

City of Madison, WI Public Works Contract 9138

Date Revised: 1/26/2022

Notes:

Positive volumes are cuts, negative volumes are fills.

Not all parts of all surface models (Digital Terrain Models) are used for computations or intended for actual construction.

Existing: Warner_Survey2021-09-14_Shelter.dwg

Proposed: 2022 Warner Inclusive PG_Volume.dwg

Grp	Material	Item	From Surface Model	To Surface Model	area (sq ft)	depth (ft)	Unfactored volume (cu ft)	Unfactored volume (cu yd)	Expansion Factor (%)	Factored (Uncompacted) Volume (cu yd)
Grass to Asphalt	Topsoil Excavate	Strip 6in topsoil	n/a	n/a	546	0.50	273	10.1	0%	10.1
Grass to Asphalt	Subsoil Excavate	Cut subsoil to proposed subgrade	Ex-6in	Pro-12in	546	varies	290	10.7	0%	10.7
Grass to Asphalt	Subsoil Place	Fill subsoil to proposed subgrade	Ex-6in	Pro-12in	546	varies	0	0.0	0%	0.0
Grass to Asphalt	Gravel (Path) Place	Place 9in gravel base, out to 6in from asphalt edge	n/a	n/a	546	-0.75	-410	-15.2	0%	-15.2
Grass to Asphalt	Asphalt Place	Place 3in asphalt	n/a	n/a	481	-0.25	-120	-4.5	0%	-4.5
Grass to Asphalt	Topsoil Place	Place 3in topsoil on 6in wide gravel edge	n/a	n/a	65	-0.25	-16	-0.6	0%	-0.6
Grass to Concrete	Topsoil Excavate	Strip 6in topsoil	n/a	n/a	1022	0.50	511.12	18.9	0%	18.9
Grass to Concrete	Subsoil Excavate	Cut subsoil to proposed subgrade	Ex-6in	Pro-11in	1022	varies	316.72	11.7	0%	11.7
Grass to Concrete	Subsoil Place	Fill subsoil to proposed subgrade	Ex-6in	Pro-11in	1022	varies	-48.63	-1.8	0%	-1.8
Grass to Concrete	Gravel (for concrete edge) Place	Place 6in gravel base out to 6in from pavement edge	n/a	n/a	1022	-0.50	-511.12	-18.9	0%	-18.9
Grass to Concrete	Concrete Place	Place 5in concrete	n/a	n/a	1022	-0.42	-425.97	-15.8	0%	-15.8
Grass to Grass	Topsoil Excavate	Strip 6in topsoil	n/a	n/a	1837	0.50	918.30	34.0	0%	34.0
Grass to Grass	Subsoil Excavate	Cut subsoil to proposed subgrade	Ex-6in	Pro-6in	1837	varies	70.29	2.6	0%	2.6
Grass to Grass	Subsoil Place	Fill subsoil to proposed subgrade	Ex-6in	Pro-6in	1837	varies	-214.93	-8.0	0%	-8.0
Grass to Grass	Topsoil Place	Place 6in topsoil	n/a	n/a	1837	-0.50	-918.30	-34.0	0%	-34.0
Grass to Play Surface	Topsoil Excavate	Strip 6in topsoil	n/a	n/a	7032	0.50	3516	130.2	0%	130.2
Grass to Play Surface	Subsoil Excavate	Cut subsoil to proposed subgrade	Ex-6in	Pro-8in	7032	varies	526	19.5	0%	19.5
Grass to Play Surface	Subsoil Place	Fill subsoil to proposed subgrade	Ex-6in	Pro-8in	7032	varies	-726	-26.9	0%	-26.9
Grass to Play Surface	Gravel (for Play Surface) Place	Place 4in gravel	n/a	n/a	7032	-0.33	-2320	-85.9	0%	-85.9
Grass to Play Surface	Play Surface Place	Place 4in PIP playsurface	n/a	n/a	7032	-0.33	-2320	-85.9	0%	-85.9

Warner Park Playground - Earthwork Quantities

City of Madison, WI Public Works Contract #9138

Date Revised: 1/26/2022

Derived from more detailed spreadsheet available from Parks Div

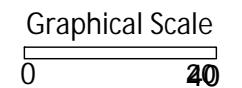
Computation Summary

Positive volumes are cuts (material available), negative volumes are fills (material needed)

Row Labels	Sum of Unfactored volume (cu yd)
Asphalt Place	-4.5
Play Surface Place	-85.9
Subsoil Excavate	44.6
Subsoil Place	-36.7
Topsoil Excavate	193.3
Topsoil Place	-34.6
Concrete Place	-15.8
Gravel (Path) Place	-15.2
Gravel (for concrete edge) Place	-18.9
Grand Total	26.3

Bid Item	Quantity	Units	Relation to Table Above
20101 Excavation Cut	238	CY	= Subsoil Excavate + Topsoil Excavate
20202 Fill Borrow	67	CY	= Subsoil Excavate + Subsoil Place
20221 Topsoil	207	SY	= (Topsoil Place) - 187
40102 Crushed Aggregate Base Course Gradation No. 2 & 3	246	tons	Pavement Place + Gravel for Playsurface Place
40202 HMA Pavement 4 LT 58-28 S	10.0	tons	= Asphalt Place * - 2.16 ton/cubic yard
90002 Playground Surfacing - Poured-In-Place Rubber	96	CY	= Play Surface Place * -1.10

City of Madison
Department of Public Works
PARKS DIVISION
City-County Building, Suite 104
210 Martin Luther King, Jr. Blvd.
Madison, WI 53703



PROJECT:

2022 INCLUSIVE PLAYGROUNDS

PROJECT ADDRESS:

*WARNER PARK
2930 N SHERMAN AVE
MADISON, WI 53704*

Although every effort has been made in preparing these plans and checking them for accuracy, the contractor and subcontractors must check all details and dimensions of their trade and be responsible for the same.

ITEM DATE
ADVERTISED TO BID: KK 2022-03-28

PUBLIC WORKS PROJECT #:
9172

SHEET TITLE:
DESIGN COMPUTATIONS

SHEET NUMBER:
2.7

PROJECT:

**2022 INCLUSIVE
 PLAYGROUNDS**

PROJECT ADDRESS:

**RENNEBOHM &
 WARNER PARKS**

Although every effort has been made in preparing these plans and checking them for accuracy, the contractor and subcontractors must check all details and dimensions of their trade and be responsible for the same.

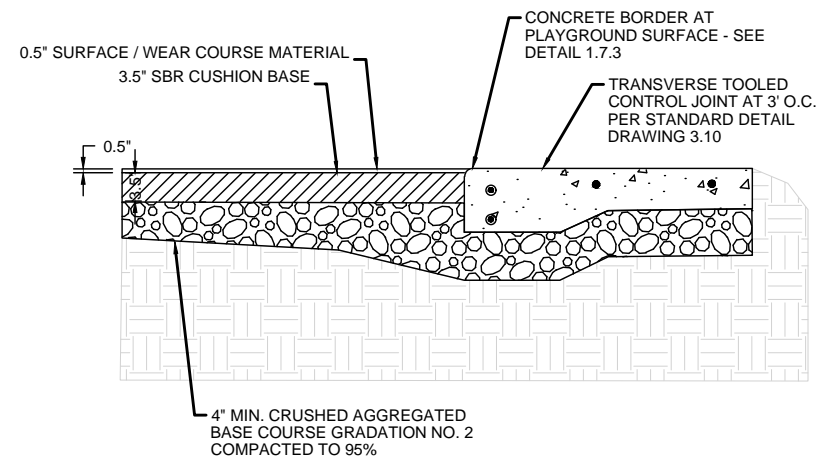
ITEM	DATE
ADVERTISED TO BID: KK	2022-03-28

PUBLIC WORKS PROJECT #:
9172

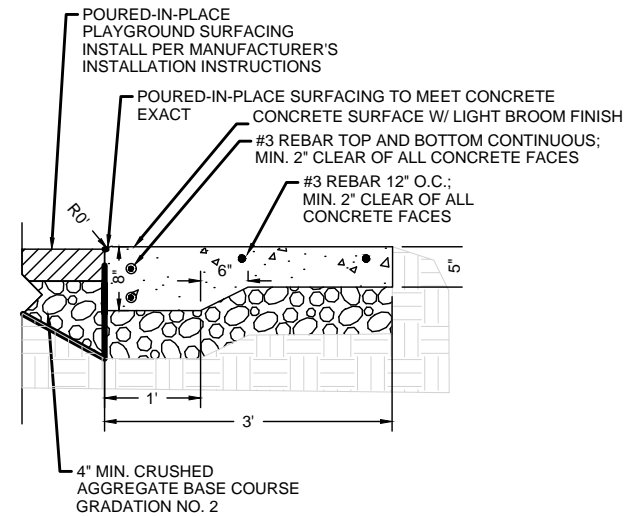
SHEET TITLE:
**POURED IN PLACE
 SURFACING DETAILS**

SHEET NUMBER:

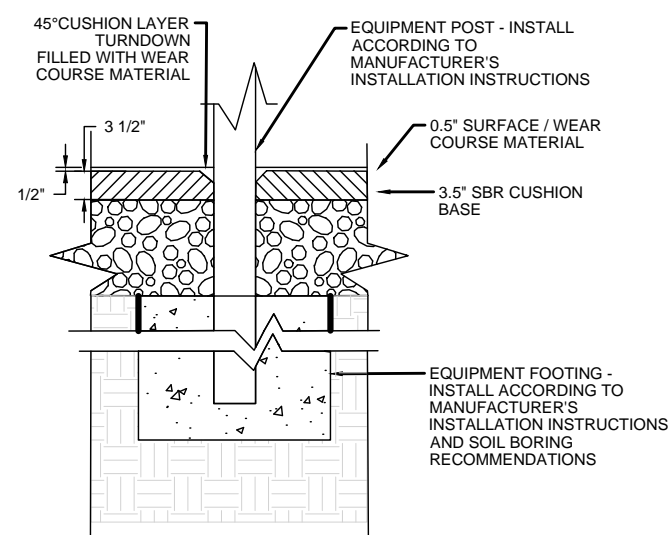
3.1



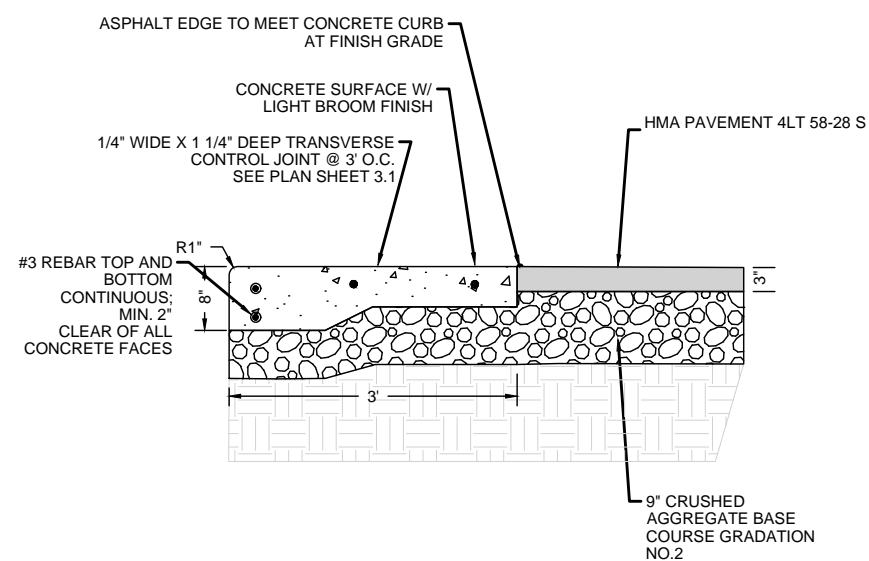
1 POURED IN PLACE PLAYGROUND SURFACING



2 PAVEMENT EDGE AT PLAYGROUND SURFACE



3 EQUIPMENT POST AT PLAYGROUND SURFACE

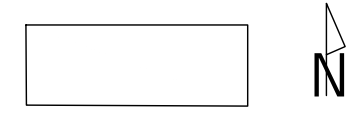


4 CONCRETE BORDER AT PLAYGROUND SURFACE

NOTE:
 PRODUCT SHOWN IS MONTAGE II MAJESTIC STEEL PANEL
 AS MANUFACTURED BY
 AMERISTAR
 1555 N. MINGO TULSA, OK 74116
 WWW.AMERISTARFENCE.COM

City of Madison
 Department of Public Works
PARKS DIVISION
 City-County Building, Suite 104
 210 Martin Luther King, Jr. Blvd.
 Madison, WI 53703

play
**MADISON
 PARKS**



PROJECT:

*2022 INCLUSIVE
 PLAYGROUNDS*

PROJECT ADDRESS:

*RENNEBOHM &
 WARNER PARKS*

Although every effort has been made in preparing these plans and checking them for accuracy, the contractor and subcontractors must check all details and dimensions of their trade and be responsible for the same.

ITEM	DATE
ADVERTISED TO BID: KK	2022-03-28

PUBLIC WORKS PROJECT #:
9172

SHEET TITLE:
*ORNAMENTAL FENCE
 DETAIL*

SHEET NUMBER:
3.2

